



Yarm Road, Eaglescliffe, TS16 0BX

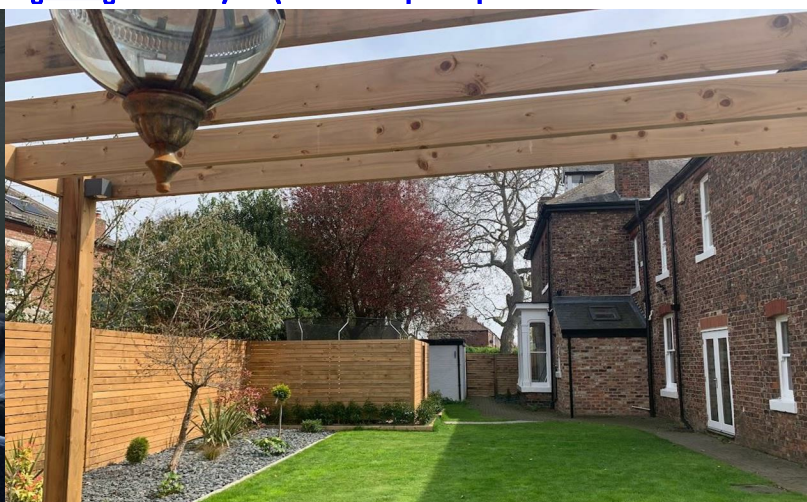
A SIX BEDROOM semi-detached Victorian house with detached double garage in a sought after location in Eaglescliffe. The property proudly showcases charming PERIOD FEATURES throughout.

The character of this home is evident from the moment you step into the hallway, leading to a lounge with large bay window helping with ample natural light. There is a spacious family/dining room overlooking the side garden, a 30' kitchen/breakfast room which is a wonderful hub for family living, complemented by French doors opening to the rear garden. A downstairs WC is also included. On the first floor, discover five bedrooms, each with its own distinct appeal. Bedroom one is accentuated by a bay window, while bedroom two features an elegant fireplace. The bathroom offers roll-top bath in addition to a good size shower enclosure and underfloor heating. A further good sized bedroom is provided in the loft space.

Externally, the property offers a mature front garden and a block-paved driveway with space to park up to 5 cars, and leading to the double garage. The westward facing rear garden is tastefully landscaped, with well-maintained lawn, a porcelain tiled patio, and a pergola, providing a serene outdoor space. Additionally, there are outhouses with power and electricity.

This characterful property in a sought after location, is close to highly regarded primary, secondary and private schools, Eaglescliffe Golf Club and Eaglescliffe Train Station and within easy access to the cobbled High Street of Yarm known for boutique shops, restaurants and cafes.

Offers In The Region Of £750,000



Yarm Road, Eaglescliffe, TS16 0BX

HALL

LOUNGE

14'5 x 13'8 (4.39m x 4.17m)

FAMILY ROOM/DINING ROOM

16'5 x 13'10 (5.00m x 4.22m)

KITCHEN/BREAKFAST ROOM

30'10 x 12'1 (9.40m x 3.68m)

WC

6'9 x 4'11 (2.06m x 1.50m)

LANDING

BEDROOM ONE

17'5 x 11'7 (5.31m x 3.53m)

BEDROOM TWO

13'3 x 10'11 (4.04m x 3.33m)

BEDROOM THREE

12'8 x 12'7 (3.86m x 3.84m)

BEDROOM FOUR (LOFT)

14'10 x 14'7 (4.52m x 4.45m)

BEDROOM FIVE

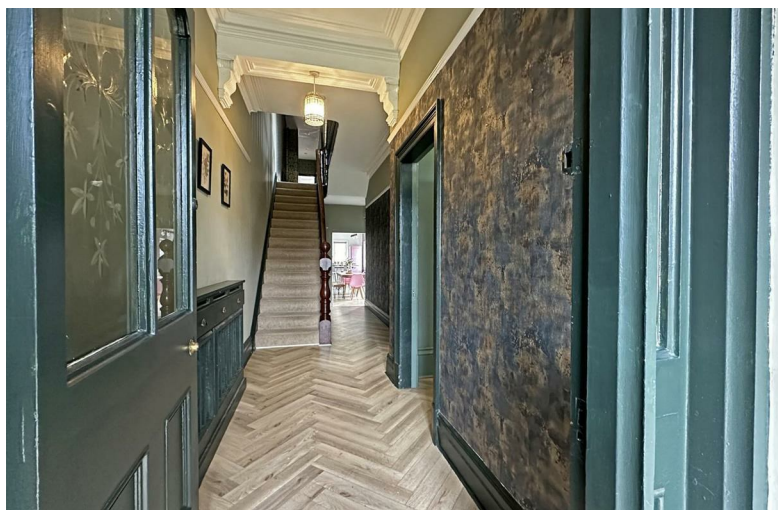
9'11 x 6'7 (3.02m x 2.01m)

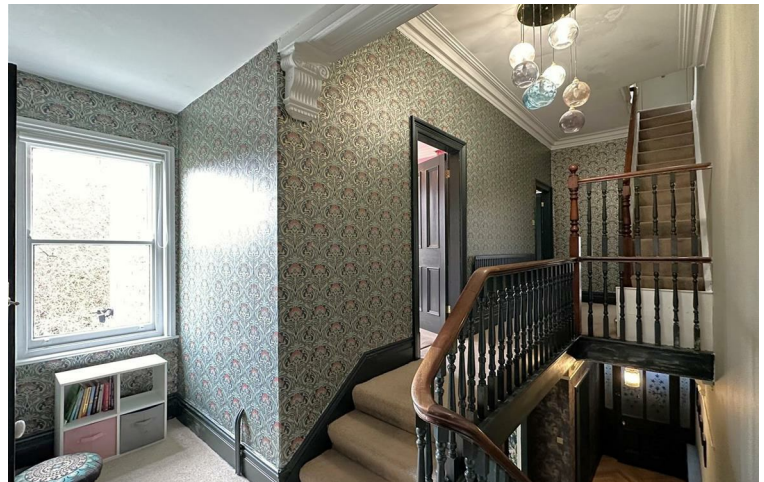
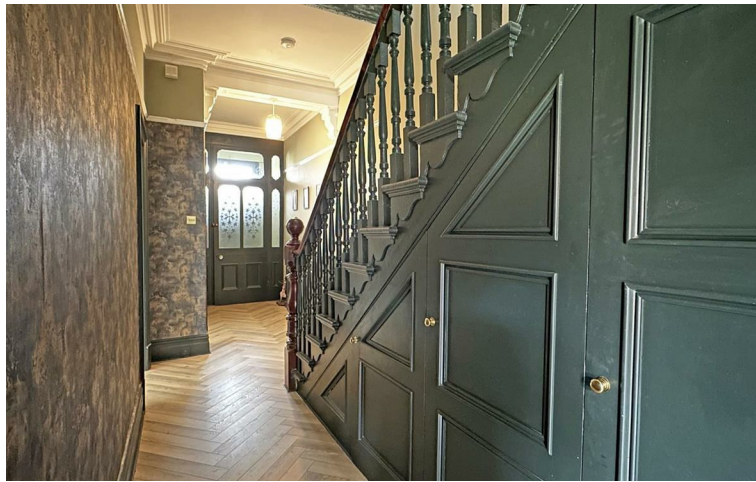
BEDROOM SIX

9 x 8'1 (2.74m x 2.46m)

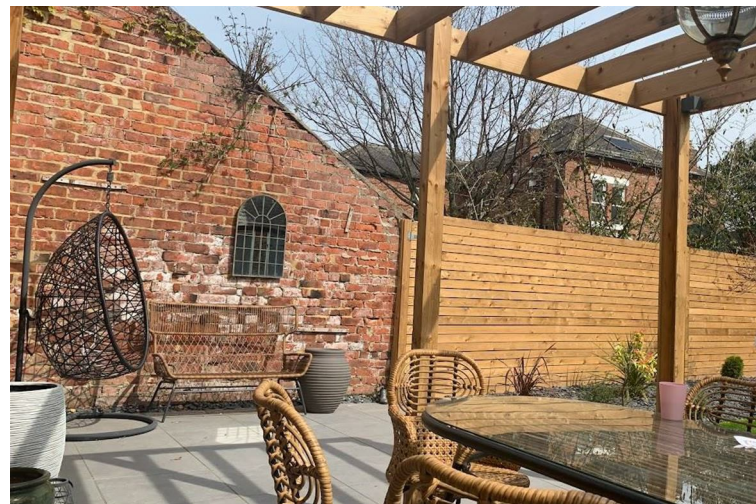
BATHROOM

10'3 x 7'9 (3.12m x 2.36m)



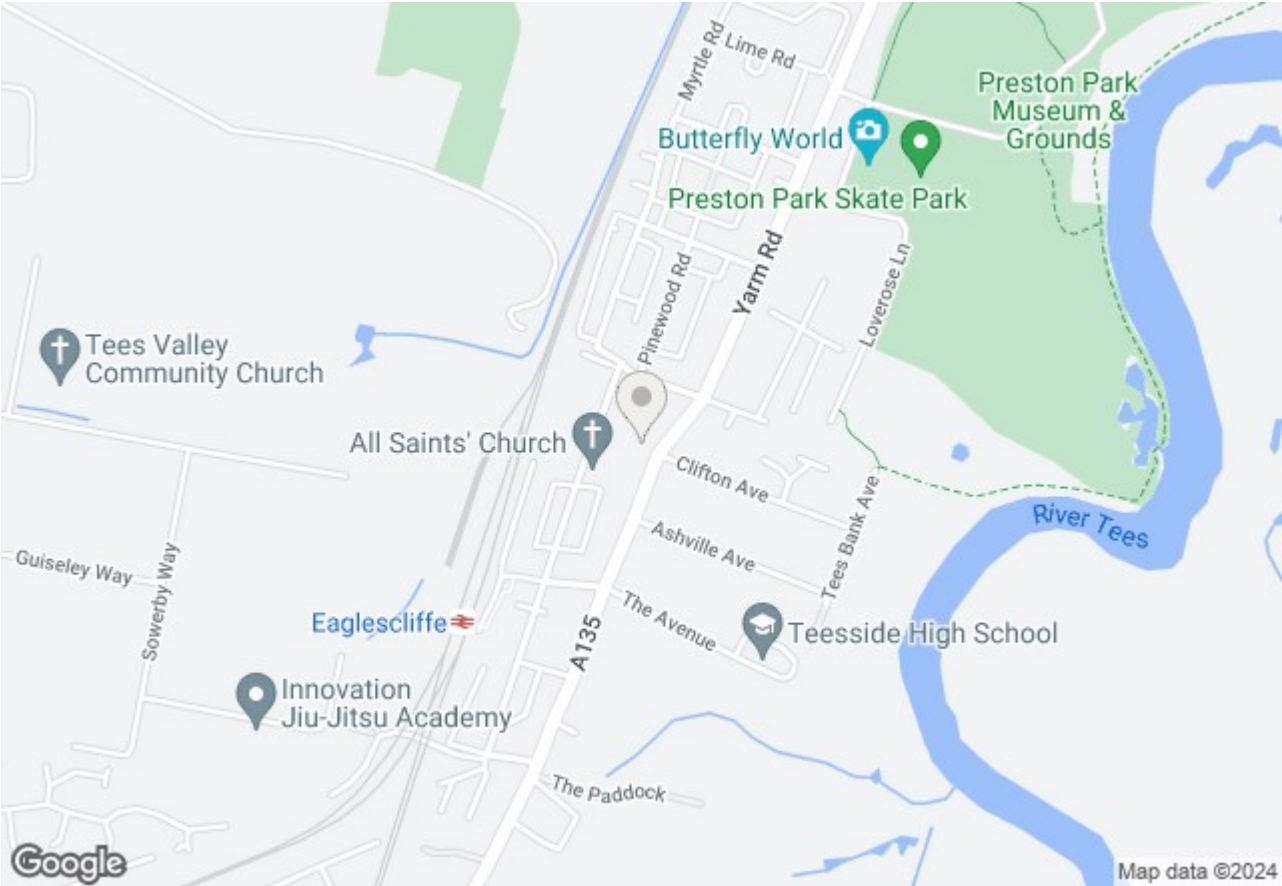


Yarm Road, Eaglescliffe, TS16 0BX



Tel: 01642 248248

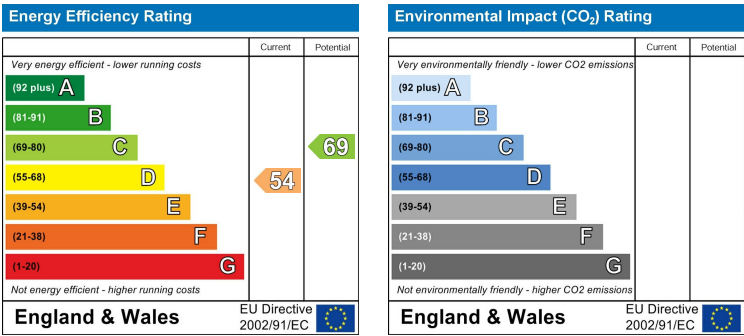
Yarm Road, Eaglescliffe, TS16 0BX



Whilst every attempt has been made to ensure the accuracy of the floor plan contained here, measurements of doors, windows, rooms and any other items are approximate and no responsibility is taken for any error, omission, or mis-statement. The measurements should not be relied upon for valuation, transaction and/or funding purposes. This plan is for illustrative purposes only and should be used as such by any prospective purchaser or tenant. The services, systems and appliances shown have not been tested and no guarantee as to their operability or efficiency can be given.

Copyright V360 Ltd 2024 | www.houseviz.com

Yarm Road, Eaglescliffe, TS16 0BX



VIEWING

Please contact us on 01642 248248 if you wish to arrange a viewing or would like more information.

These particulars, whilst believed to be accurate are set out as a general outline only for guidance and do not constitute any part of an offer or contract. Intending purchasers should not rely on them as statements of representation of fact, but must satisfy themselves by inspection or otherwise as to their accuracy. No person in this firms employment has the authority to make or give any representation or warranty in respect of the property.